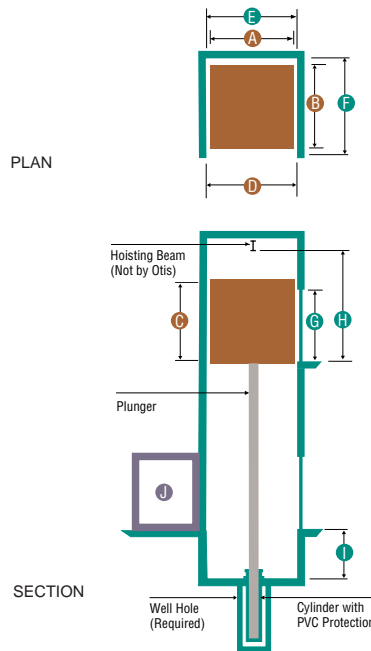


Hydraulic Freight Elevators

Travel Height
 – Maximum 42 ft
Maximum stops 4
Speed (ft/min) 50/75/100

Key Attributes

- Flush-mounted, vandal-resistant stainless steel fixtures
- Painted checkplate floor
- Manual operated single section car gates
- 8' car gates
- Optional:
 - Front and rear entrances
 - REM remote elevator monitoring
 - Car gates
 - 10'
 - Double section
 - Power operated



Dimensions	Freight elevators				
Rated lbs.	6,000	6,000	10,000	12,000	
Class Loading	Class C1 ¹	Class A ²	Class C1 ¹	Class C1 ¹	
Car					
A Interior width (single section gate)	8'-0"	11'-8"	10'-0"	10'-0"	
B Interior depth (single section gate)	11'-6 1/2"	7'-6 1/2"	11'-6 1/2"	13'-6 1/2"	
	Interior depth (double section gate)	11'-4"	7'-4"	11'-4"	13'-4"
C Interior height	8'-0" (Optional 10'-0")				
D Car gate width	8'-0"	11'-8"	10'-0"	10'-0"	
Hoistway					
E Single width	10'-4"	14'-0"	12'-4"	12'-4"	
	Width in seismic zones ²	10'-4"	14'-0"	12'-7"	12'-7"
F Depth	12'-11"	8'-11"	12'-11"	14'-11"	
G Clear opening height required	8'-0" (Optional 10'-0")				
H Clear overhead for single section gate	15'-6" (Optional 10' Cab overhead 17'-6")				
	Clear overhead for double section gate	12'-6" (Optional 10' Cab overhead 15'-6")			
I Minimum pit depth ³	5'-0"				
Machine Room					
J Width x depth	10'-6" x 7'-6"				

¹ Class C1: Industrial truck loading.

Class A: General freight loading (any single piece of load is not more than 1/4 capacity of elevator).

² In seismic zones 2 or greater.

³ 5'-6" for 10' doors.